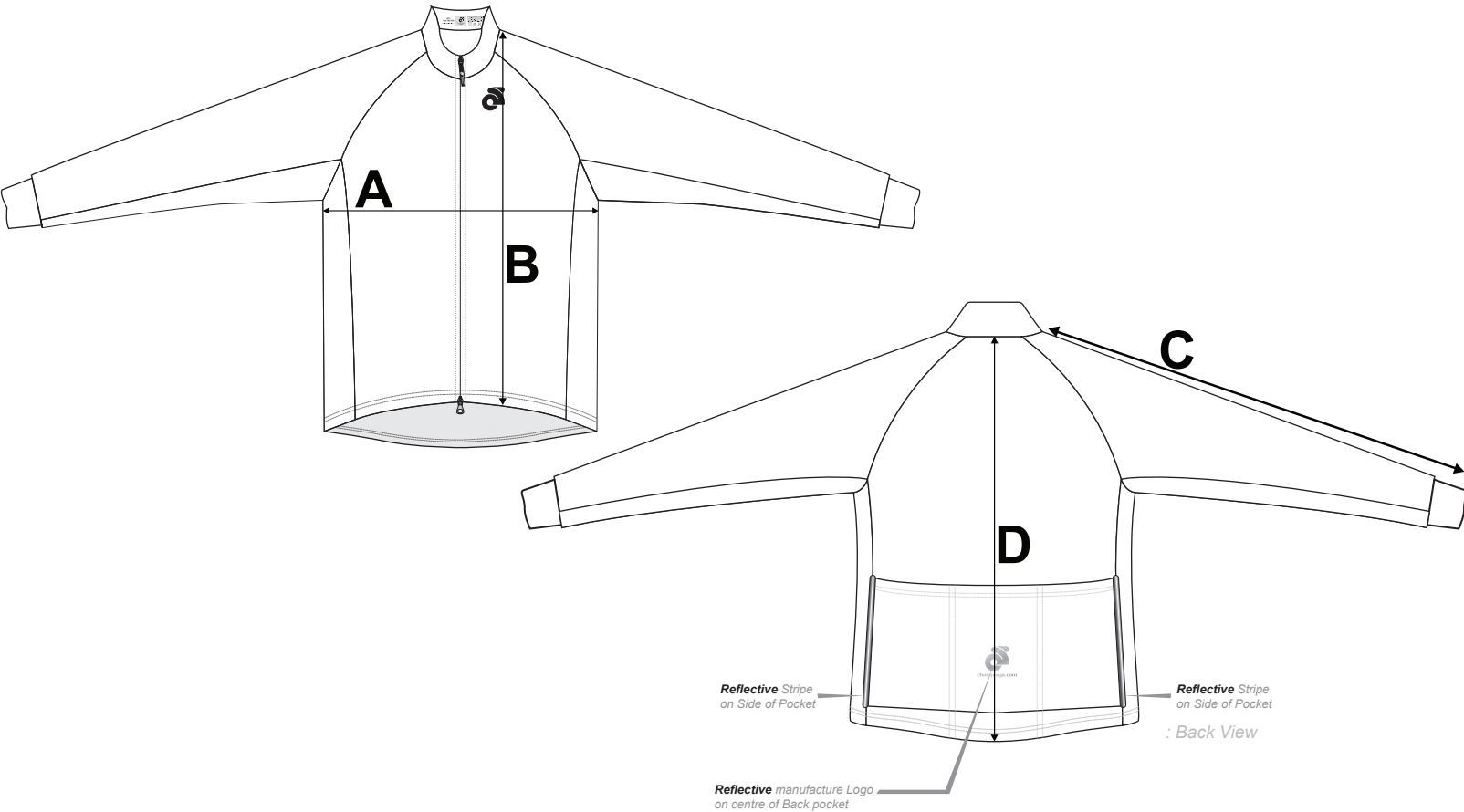


If you're unsure which size to buy, try measuring a Winter Jacket that you already own that fits you well, and compare those measurements to the size chart. Lay the Winter Jacket on a flat surface and use the above guide to measure the Winter Jacket.

**Note: All measurements are approximate.**

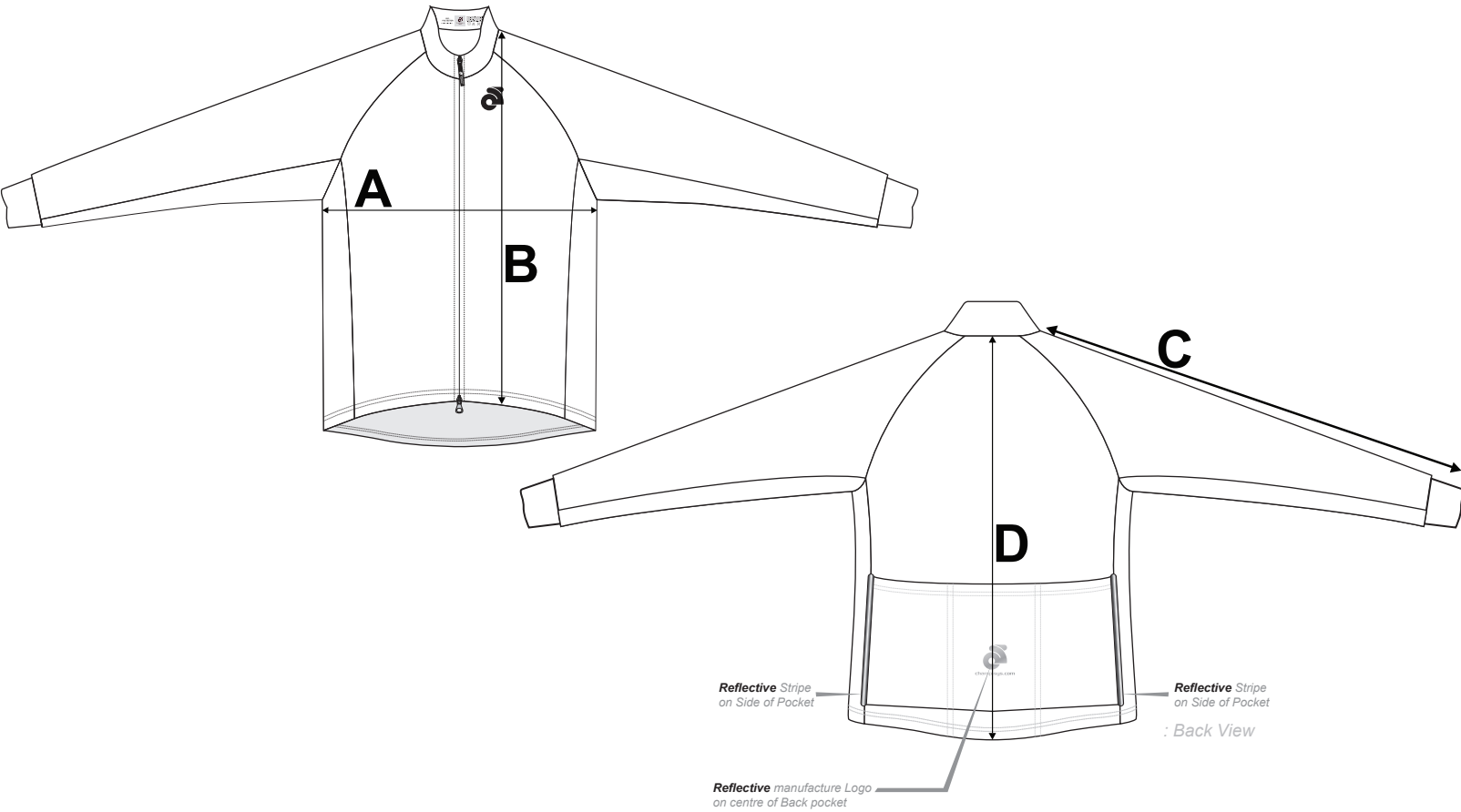
Size	A (Chest)	B (Front Length)	C (L/S Length)	D (Back Length)
XS	18"	23 1/4"	30 3/4"	25 3/4"
S	19"	24"	31 3/8"	26 3/8"
M	20"	24 3/4"	32"	27"
L	21"	25 1/2"	32 5/8"	27 5/8"
XL	22"	26 1/4"	33 1/4"	28 1/4"
2XL	23"	27"	33 7/8"	28 7/8"
3XL	24 1/2"	27 3/4"	34 1/2"	29 1/2"
4XL	26"	28 1/2"	35 1/8"	30 1/8"



If you're unsure which size to buy, try measuring a Winter Jacket that you already own that fits you well, and compare those measurements to the size chart. Lay the Winter Jacket on a flat surface and use the above guide to measure the Winter Jacket.

**Note: All measurements are approximate.**

Size	A (Chest)	B (Front Length)	C (L/S Length)	D (Back Length)
XS	17"	22 1/2"	30"	25 1/8"
S	18"	23 1/4"	30 5/8"	25 3/4"
M	19"	24"	31 1/4"	26 3/8"
L	20"	24 3/4"	31 7/8"	27"
XL	21"	25 1/2"	32 1/2"	27 5/8"
2XL	22"	26 1/4"	33 1/8"	28 1/4"
3XL	23 1/2"	27"	33 3/4"	28 7/8"
4XL	25"	27 3/4"	34 3/8"	29 1/2"



If you're unsure which size to buy, try measuring a Winter Jacket that you already own that fits you well, and compare those measurements to the size chart. Lay the Winter Jacket on a flat surface and use the above guide to measure the Winter Jacket.

**Note: All measurements are approximate.**

Size	A (Chest)	B (Front Length)	C (L/S Length)	D (Back Length)
JR-XS/TP 7-8	16"	18"	22 1/2"	20"
JR-S/P 9-10	17"	19 1/4"	23 1/2"	21 1/4"
JR-M 11-12	18"	20 1/2"	24 1/2"	22 1/2"
JR-L/G 13-14	19 1/4"	22 1/4"	26"	24 1/8"
JR-XL/TG 15-16	20 1/2"	24"	27 1/2"	25 3/4"